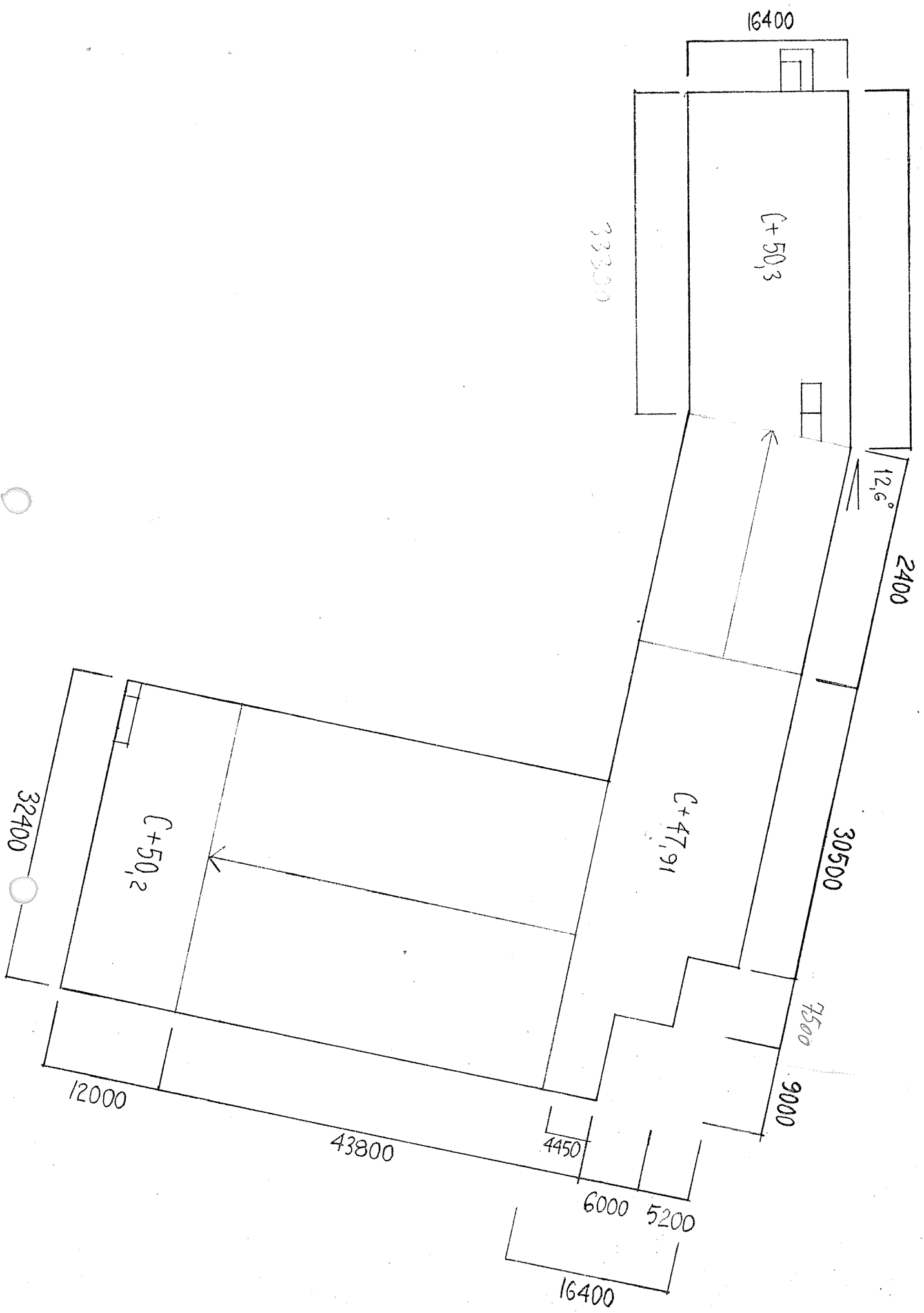




Mottatt 27 SEPT. 1982



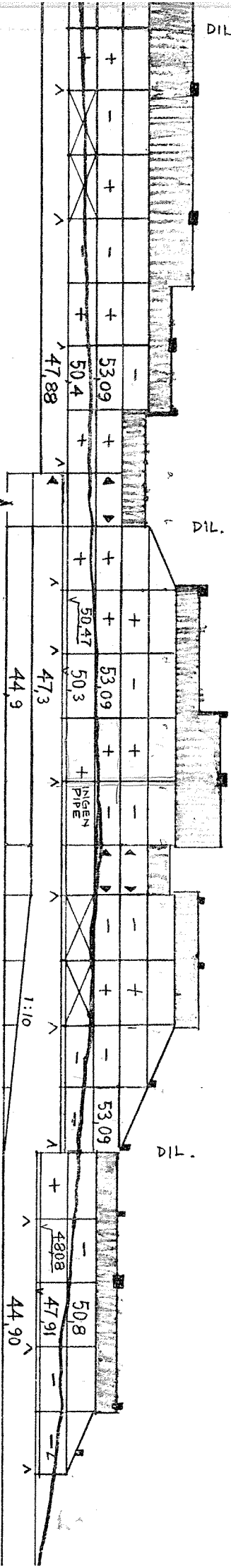
1. ETASJE :
GULV FÖRES 170

1. ETASJE :
SVÄLGANG I FRONT

1. ETASJE :
GULV FÖRES 170

4.009 4.006 4.001 4.006^H 4.015 4.008^H 4.008^H 4.004^H 4.006^H 4.007^H 4.013/4.015^H

11/12 5/8u 5/8u 11/12 11/12 11/12 1 11/12 5/4 5/4 11/13 11/13 11/13 5/8u 5/8u 11/12 4 4 2



PORT RÖN
13 →

FLYTTES TIL MOTS. VEGG →

FLYTTES TIL MOTS. VEGG →

FÄLLES RÖN

FLYTTES TIL MOTS. VEGG →

PIPE FLYTTES TIL M.V. →

FLYTTES TIL MOTS. VEGG →